



MODULARITY

Module/Move-In Sequence
630 Modules
9 Per Day
15 Weeks



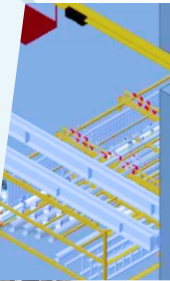
BEYOND PPMOF

Global Modularity Leader

Pre-fabrication Pre-assembly Modularization Off-site Fabrication (PPMOF)

As high technology manufacturers increase their focus on cost, speed, and safety as key components of capital equipment projects, few solutions have existed to address the need to reduce infrastructure cost without sacrificing quality, safety and serviceability.

NEHP and Exyte group companies are addressing these challenges through smart manufacturing solutions and process modularization thereby elegantly and efficiently supplying prefabricated process utilities to construction sites as a fast, low cost alternative to conventional field methods. By advancing these smarter and **leaner** processes we in turn maximize both cost reduction and satisfaction for our customers.



What Does Modular Mean

- Providing modular Utility program **packages** "start to finish"
- An **integrated** collaborative project approach
- Team **commitment** to early project engagement
- Solving / Aligning construction **gaps** between Design and Construction
- Using **Interoperable advanced** tools
- **Reduction** of project issues - safety, laydown, trade stacking, waste
- Suggesting engineered **solutions** for fabrication, manufacturing, and installations efficiencies
- Understanding project weaknesses, strengths, risks, **challenges**
- Team nurturing for continuous **modular mind set** and behavior adaption
 - **Educating**, sharing, connecting, developing modular skills
- Develop and prepare an outline of recommendations / materials / strategies / processes that **stake holders** can use for best financial value



Improving Construction Efficiency & Productivity with Modular Innovation and Methods

Here are a few key elements and practices that will tremendously influence positive improvements within your project's cost, schedule, consumables, waste, coordination, and safety.

Complete alignment and deployment	With the use of interoperable technology applications, ie Building Information Modeling (BIM).
Improved job-site efficiency	Through more effective interfacing of people, processes, materials, equipment and information.
Maximize engineering	By creating originality through prefabrication, preassembly, modularization, and off-site fabrication techniques and processes (PPMOF).
Full team training, mind-set, behavior focus	Using proven successful integrated delivery methods.
Effective performance measurement	To drive efficiencies, productivity, quality, and innovation.

If implemented and aligned correctly, these five practices will ensure and guarantee project savings over 25%.



PPMOF Benefits

Advanced PPMOF programs reduces both on-site labor and fabrication labor costs. Using cutting-edge modeling software to control and limit rework within each product or program, the fabrication of utility process modules away from project sites has a comprehensive list of critical project reductions. Improvement areas include:

- Substantially reduces on site labor activities by 30%.
- Orbital and high purity welds removed from typical projects methods.
- Proven cost reductions by 18% to 33% from past projects.
- Increases jobsite safety.
- Material management efficiencies - LL planning.
- Compresses construction time by reducing the number of construction activities.
- Improves quality and provides standardization.
- Cost control - expandable and flexible designs built into module.
- Reduces footprint requirements by stacking & dense packing utilities and personnel.
- Overcomes skill shortages and training at jobsite.
- Site infrastructure requirements are reduced due to less manpower required on site: parking spaces, site office and storage trailers and containers, site safety supervision.
- Reduction in exposure to work related Life and Safety incidents.
- Reduction in construction contamination in the sub-fab and associated cleaning man-hours and cost.



NEHP

An Exyte Group Company

1193 South Brownell Rd., Suite 35, Williston VT 05495

T +1 802.652.1444

F +1 802.652.0044

www.nehp.com